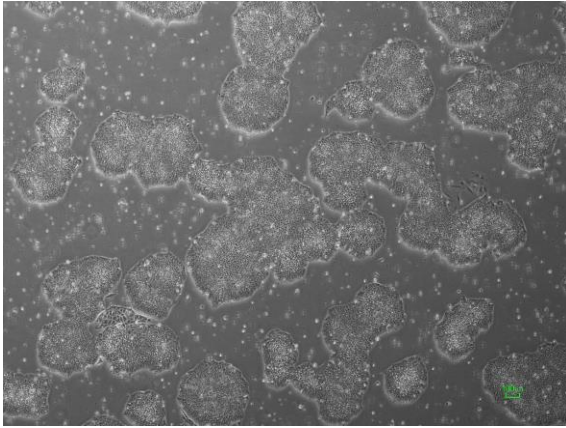
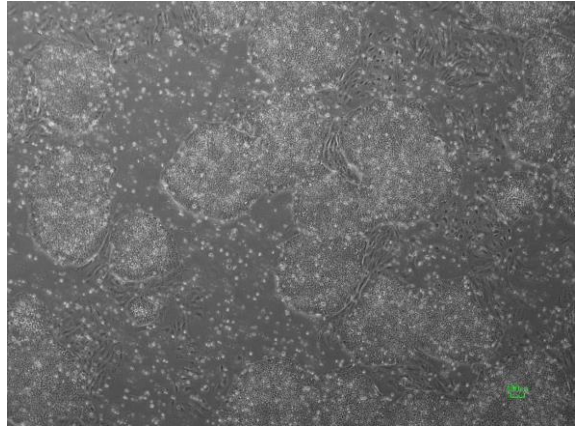


【 CiRA-jk-0046 】 Morphology of iPSC colonies

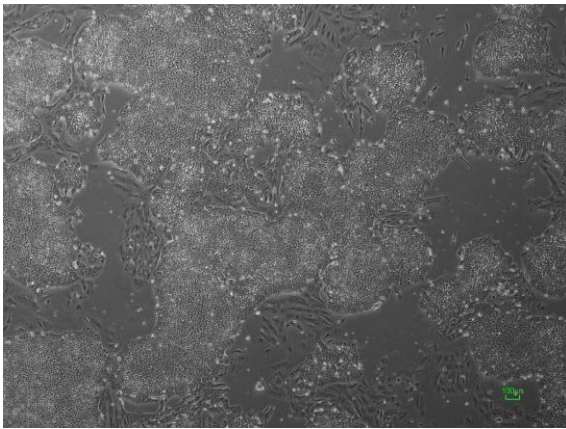
CiRA -jk-0046-A: passage-2



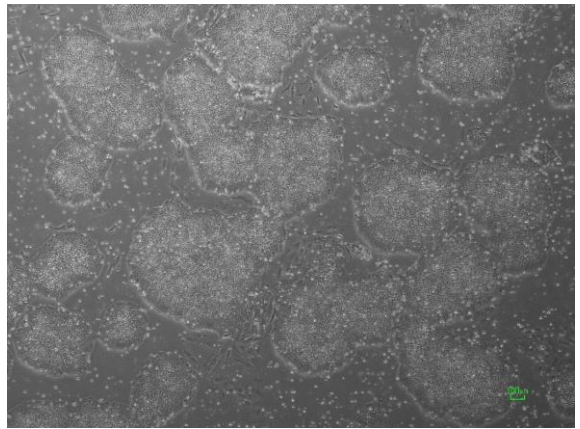
CiRA -jk-0046-B: passage-2



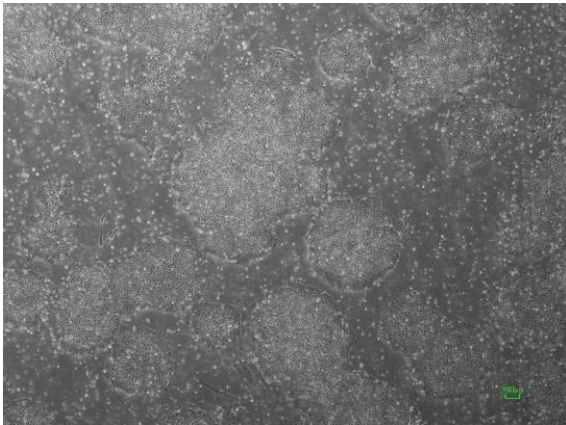
CiRA -jk-0046-C: passage-2



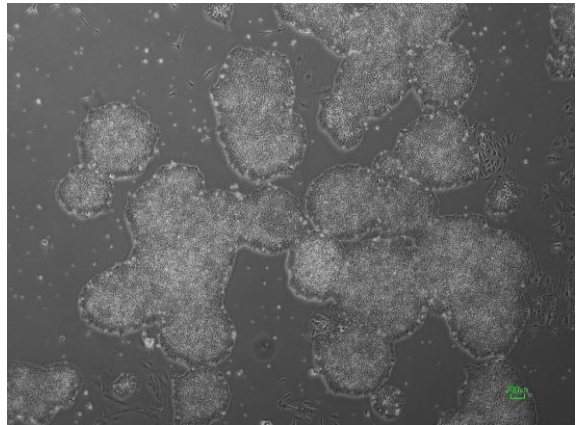
CiRA -jk-0046-D: passage-2



CiRA -jk-0046-E: passage-2



CiRA -jk-0046-F: passage-2



(All images were captured at 4x magnification)